



Member Library Locations

- Ashland** ▪ (715) 682.7060
- Bad River** ▪ (715) 682.7111 x1532
- Bayfield** ▪ (715) 779.3953
- Boulder Junction** ▪ (715) 385.2050
- Cable** ▪ (715) 798.3189
- Drummond** ▪ (715) 739.6290
- Eagle River** ▪ (715) 479.8070
- Grantsburg** ▪ (715) 463.2244
- Hayward** ▪ (715) 634.2161
- Hurley** ▪ (715) 561.5707
- Iron River** ▪ (715) 372.5451
- Lac du Flambeau** ▪ (715) 588.7001
- Lac Courte Oreilles** ▪ (715) 634.4790 x108
- Land O'Lakes** ▪ (715) 547.6006
- Lake Nebagamon** ▪ (715) 374.3477
- Madeline Island** ▪ (715) 747.3662
- Manitowish Waters** ▪ (715) 543.2700
- Mellen** ▪ (715) 274.8331
- Mercer** ▪ (715) 476.2366
- Phelps** ▪ (715) 545.2887
- Presque Isle** ▪ (715) 686.7613
- Sayner** ▪ (715) 542.2020
- Shell Lake** ▪ (715) 468.2074
- Solon Springs** ▪ (715) 378.4452
- Spooner** ▪ (715) 635.2792
- Superior** ▪ (715) 394.8860
- Washburn** ▪ (715) 373.6172
- Webster** ▪ (715) 866.7697
- Winchester** ▪ (715) 686.2926
- Winter** ▪ (715) 266.2144

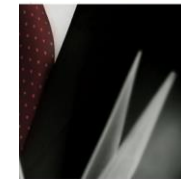
3200 E. Lake Shore Dr. ▪ Ashland, WI 54806

Northern Waters Library Service



Northern Waters

LIBRARY SERVICE



The mission of Northern Waters Library Service is to provide access to quality public library services through its member libraries.



Northern Waters Library Service

3200 East Lake Shore Drive ▪ Ashland, Wisconsin 54806

Telephone: 715.682.2365 (Toll-free: 800.228.5684)

Website: nwls.wislib.org ▪ Catalog: merlin.nwls.lib.wi.us



Northern Waters

Serving libraries in northern Wisconsin

Northern Waters was established in 1964 as one of 17 public library systems in Wisconsin created to:

- Assure access to public library service to every resident in the state.
- Promote resource sharing among Wisconsin public libraries.
- Improve the quality of public libraries.



Northern Waters Library Service serves public libraries in eight northern Wisconsin counties.

Northern Waters together with community libraries is dedicated to providing high quality public library service:

Merlin Northern Waters operates Merlin, a service that allows materials owned by all Merlin libraries to be requested from an online catalog. One library card can be used at any of the twenty-eight Merlin libraries.

Interlibrary Loan Materials not owned by member libraries can often be found in WISCAT, the statewide library catalog. Northern Waters coordinates WISCAT interlibrary loan service for member libraries.

Delivery Each year more than 300,000 books, movies, and recordings move between Northern Waters libraries. To make this possible, Northern Waters provides a quick, efficient, cost-effective delivery service.

Electronic Resource Sharing Through Northern Waters many online library resources are available through our website. The Merlin catalog provides access to member library books and media, including enhanced features from NoveList to help readers find what they are looking for. Wisconsin's Digital Library provides downloadable books, audios, music and magazines. The BadgerLink discovery database includes many resources for people of all ages including databases for business, education, health, literature, magazines, newspapers and more. NWLS also subscribes to Ancestry, a genealogy research database.

High-Speed Internet Access Public libraries are a great place to use the Internet. Northern Waters applies for affordable high-speed Internet access on behalf of its member libraries through the state TEACH program, and maintains the network through which this access is provided.

Technology Support Technology support for member libraries covers both hardware and software and includes training, troubleshooting, routine maintenance, and network administration.

Grants Northern Waters provides member libraries the opportunity to develop new programs, improve collections, and expand staff skills through the grants it administers.

Training As library services evolve, library staff must develop new skills. Northern Waters provides workshops in library administration, fundraising, children's services, cataloging, interlibrary loan, technology, and more. These workshops are available to library staff, trustees, and volunteers.

Consultation Northern Waters provides routine and customized assistance to its member libraries on topics including planning, hiring, technology, budgeting, and a wide variety of other library-related topics.

Mail-A-Book While most system services are provided through member libraries, the Mail-A-Book program is a direct library service for residents who are homebound or who live at least 15 miles from their nearest public library. Several rural book drops are provided as a convenient option for returning library materials. For an application or to learn more about the program contact Northern Waters Library Service